

ROADS

A LOVE HATE RELATIONSHIP

A Yukon Conservation Society Presentation

Sebastian Jones

Fish, Wildlife and Habitat Analyst

Sometimes We Love Them

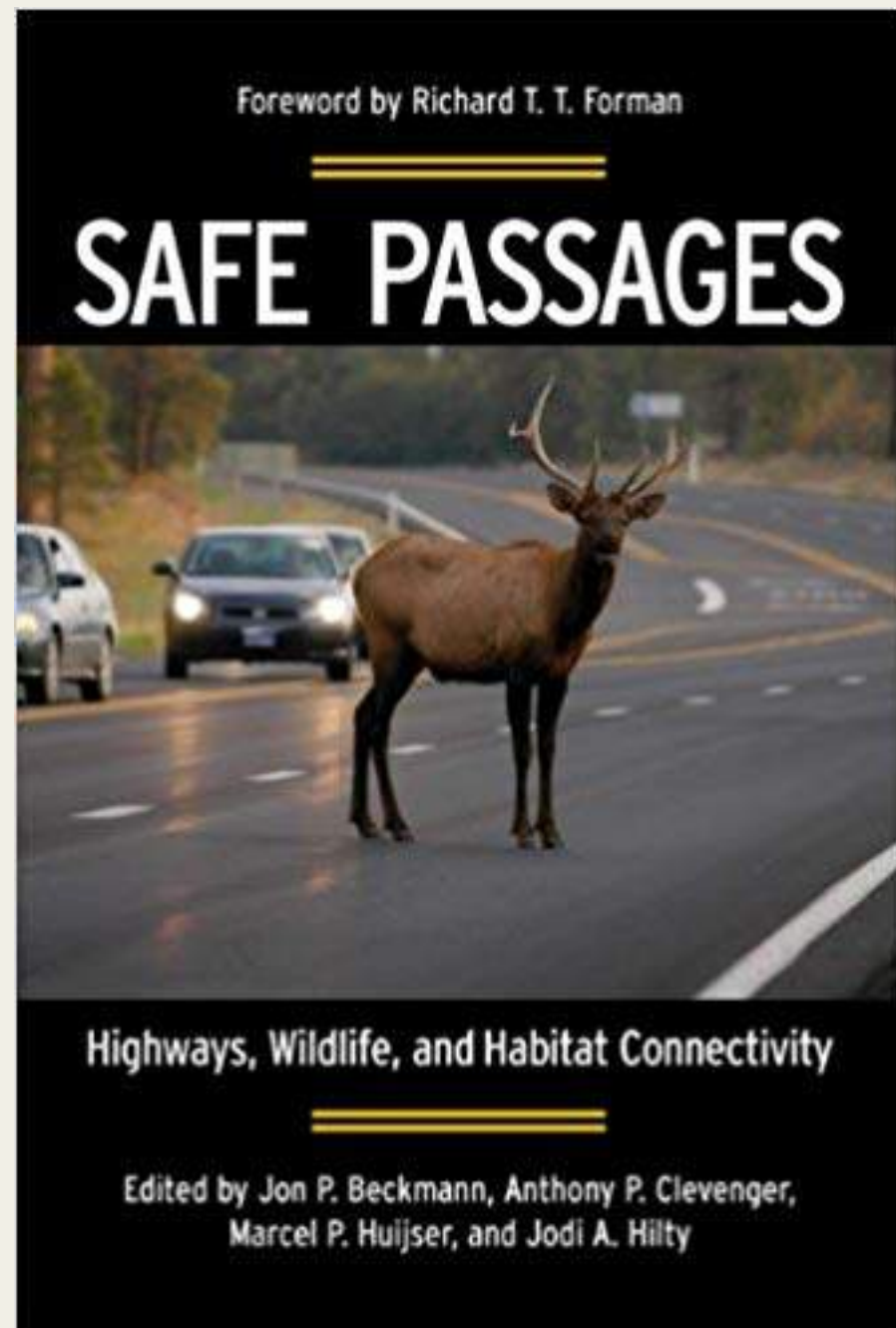


Sometimes We Hate Them



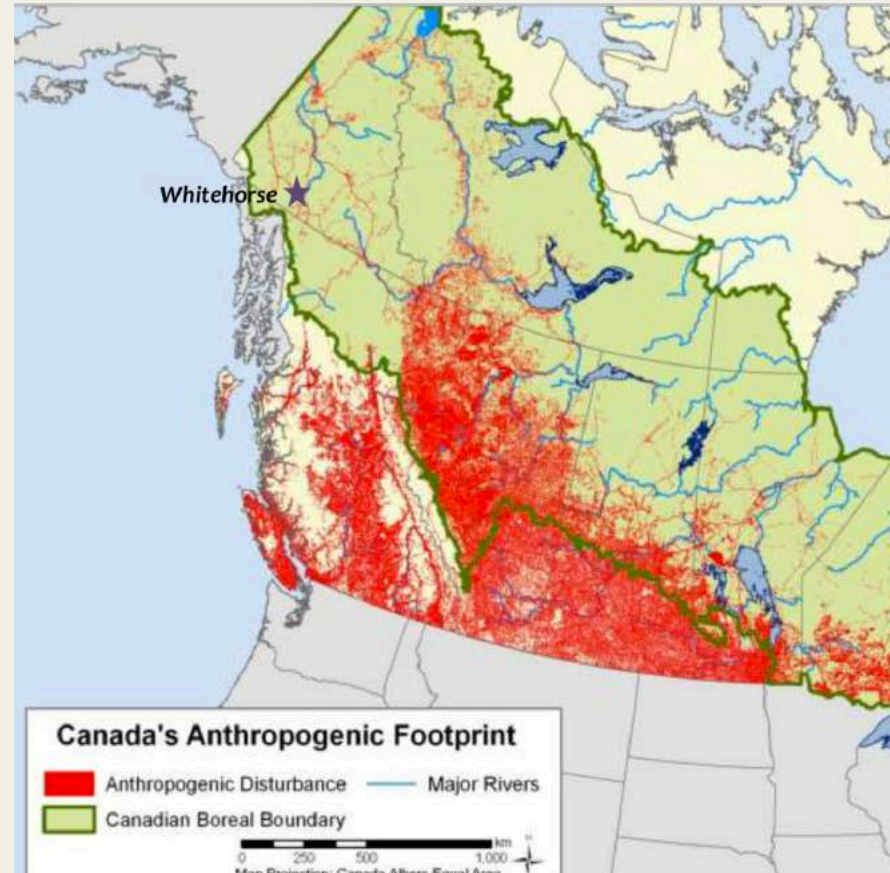
Road Ecology

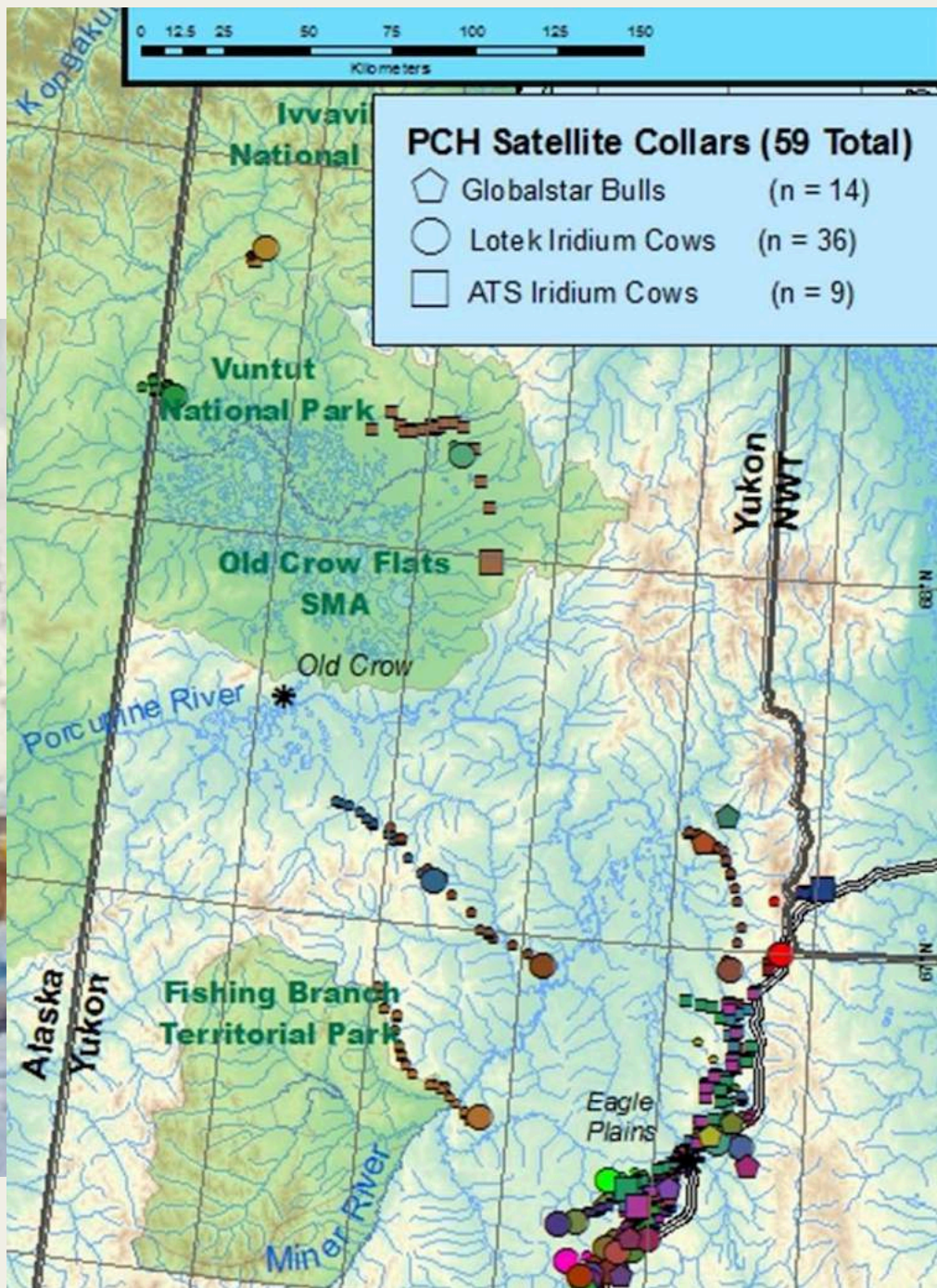
- **Road ecology** is the study of the **ecological** effects (both positive and negative) of **roads** and highways . . . **Roads** are a form of linear infrastructure intrusion that has some effects similar to infrastructure such as railroads, power lines, and canals.



Roads are bigger than they look

- Zone of influence
 - Avoidance
 - Dust
 - Hydrology
 - Hunting access
 - Animal- vehicle collisions





Roads are forever



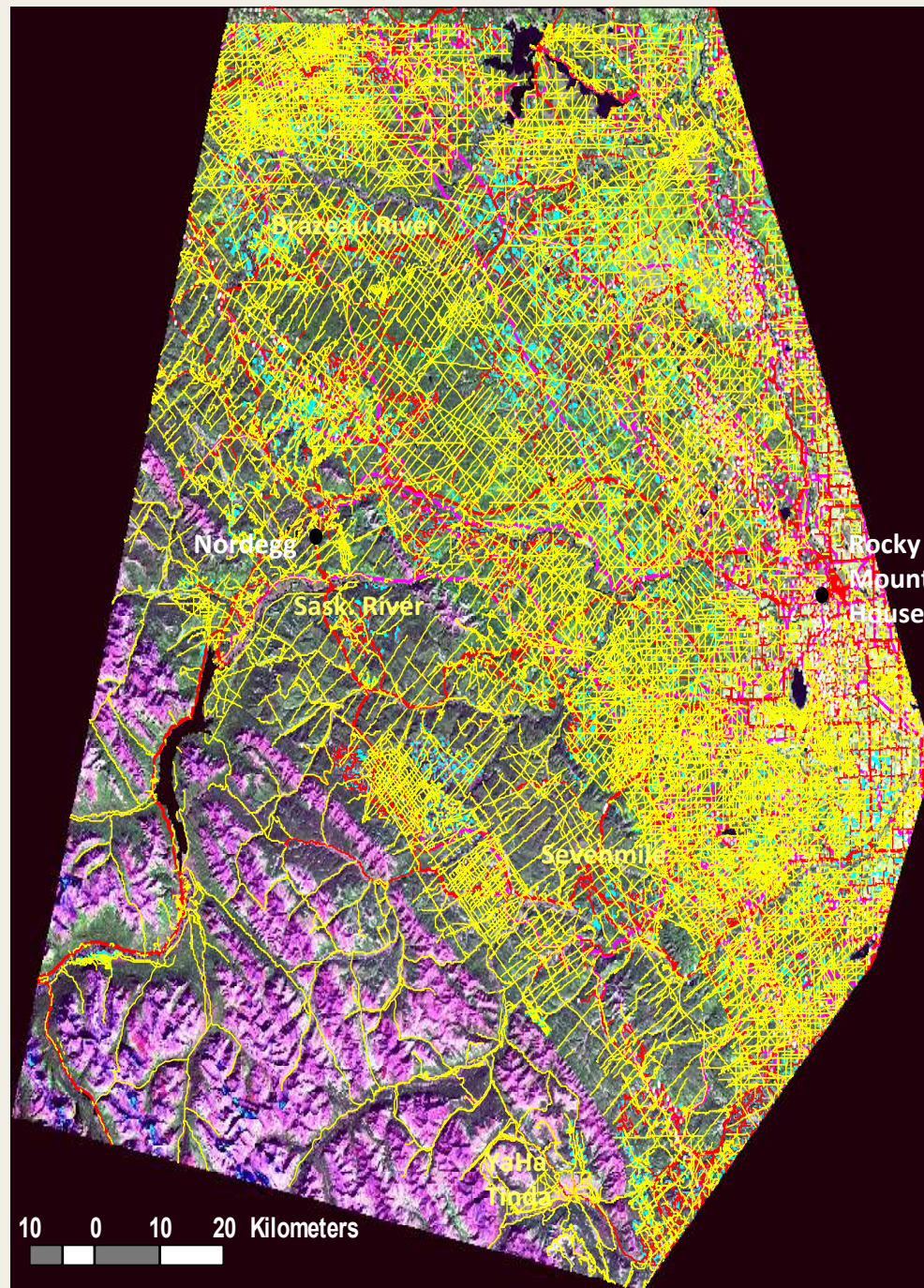
Roman road still in use



Clinton mine closed in 1978

“New roads for equipment and personnel access will be constructed on claims as required and **will be reclaimed when no longer required for operations.**”

**Road networks
Grow..
And Grow...
And spawn
more & more
development**



Roads
(7,693 km)

Cutblocks
(~950 km²)

**Utility
Corridors**
(2,784 km)

Well Sites
(4,185)

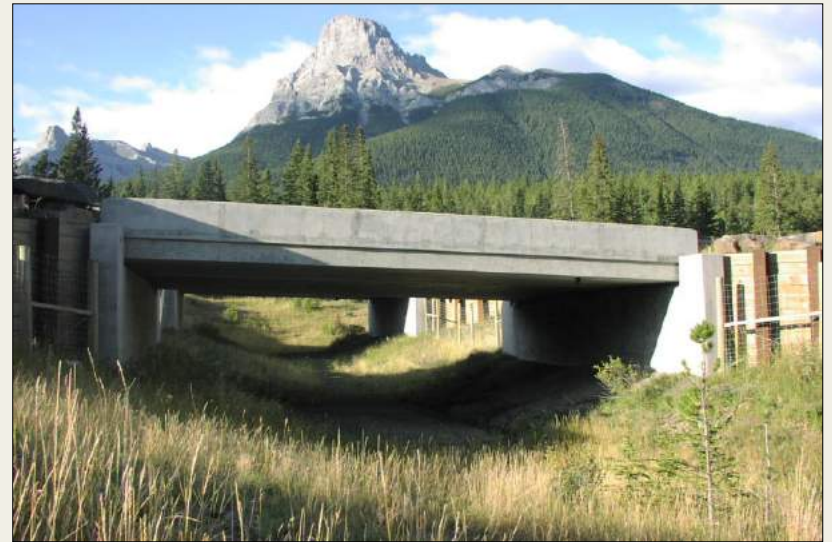
**Seismic
Lines/
Trails**
(~28,324 km)

Road design affects us too!



Some solutions

Animal overpasses or underpasses



But in Yukon...

What does not work well?



Signage not effective
deterrence



Animals avoid RipRap

Key points

- Roads are barriers
- Roads are bigger than they look
- Need baseline data on animals that use the landscape
- Need proper CE
- Strategic approach to road development, addressing collisions, movements, connectivity.
- Implement a road reclamation plan for the Yukon

What can we do?

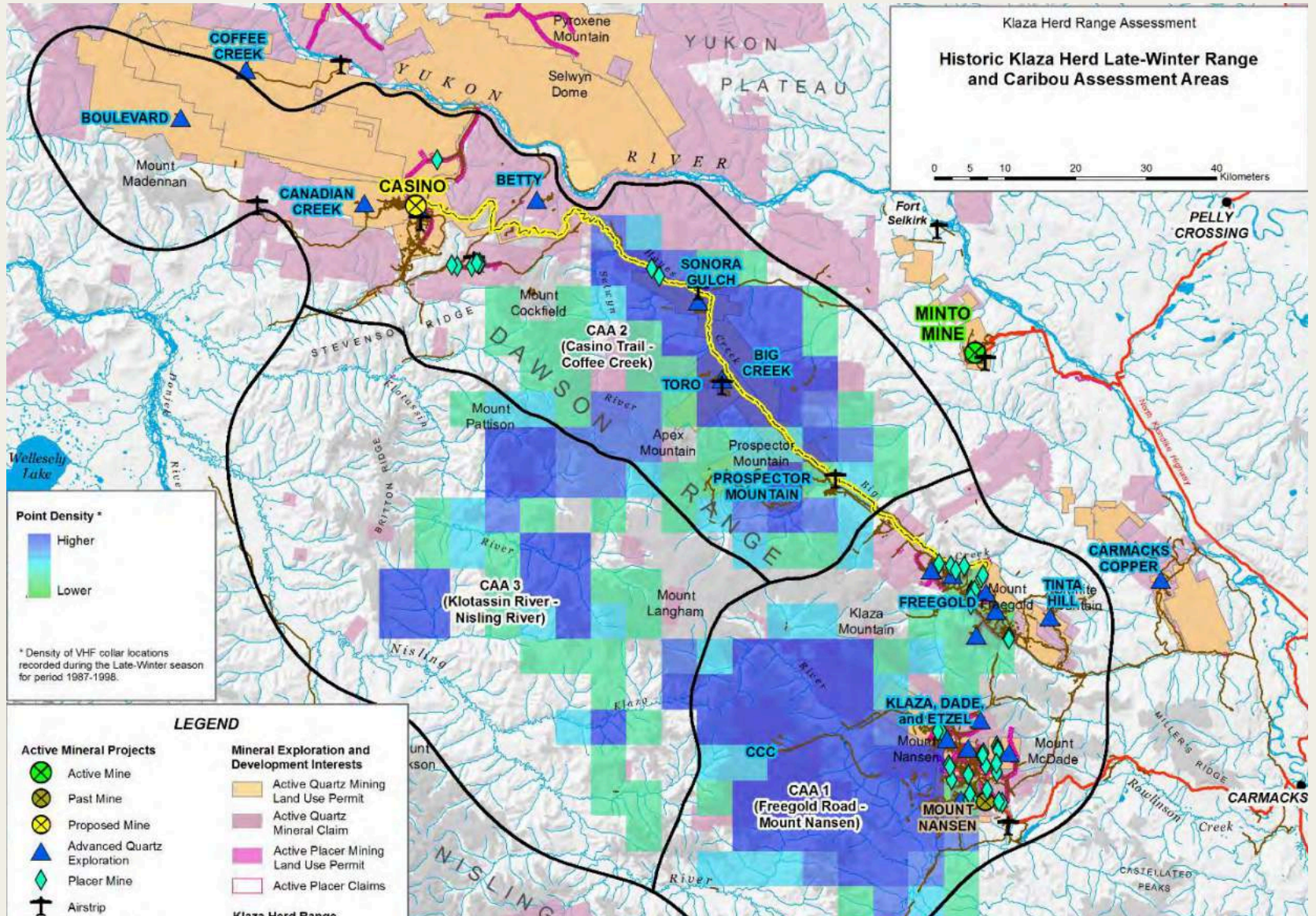
- New roads need to be planned with all social and ecological implications in mind:
 - Hydrology
 - Wildlife key habitat
 - Wildlife routes
 - Habitat connectivity
 - Collisions with wildlife
 - Increased hunter access

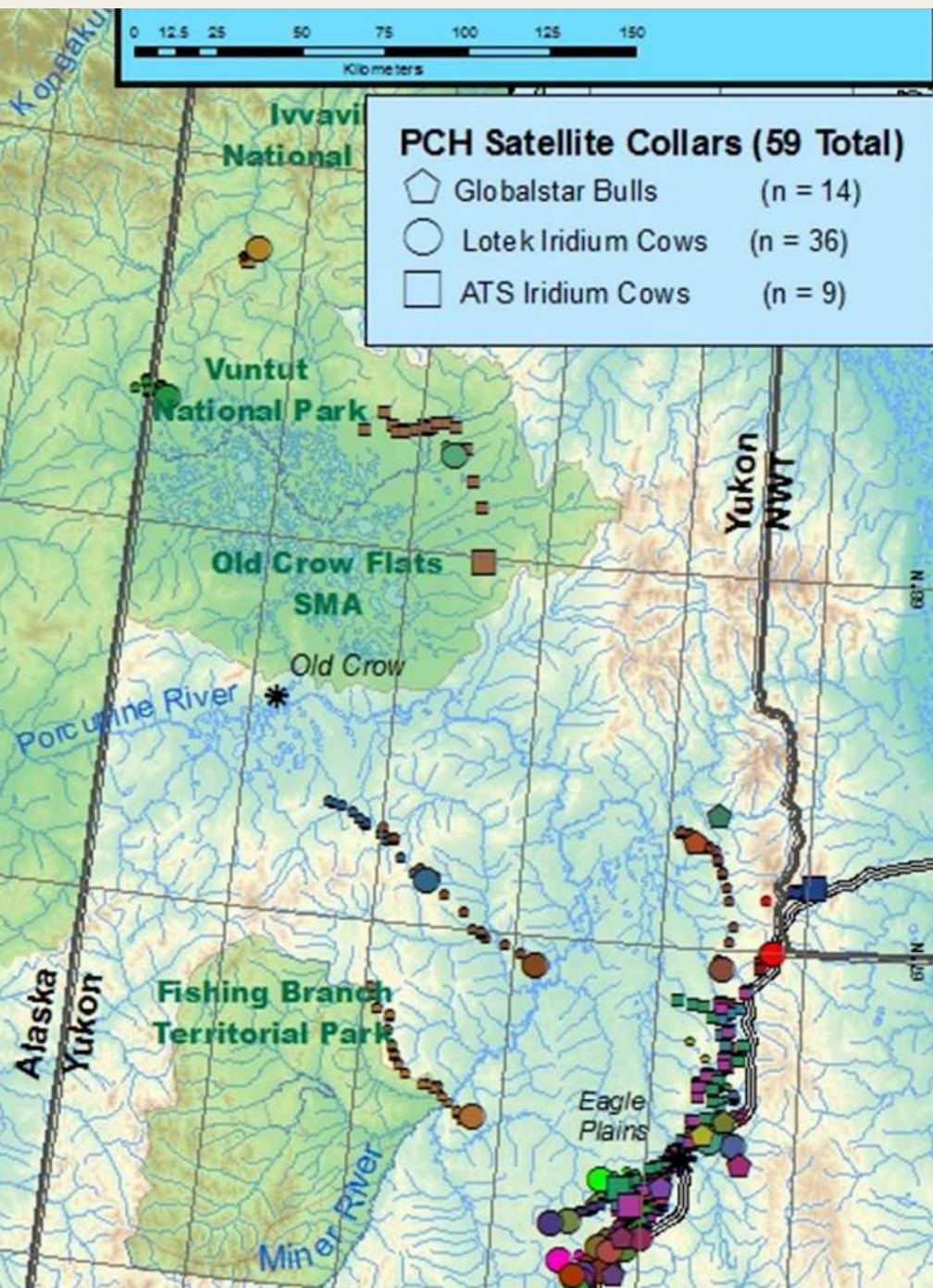
Hydrology

- What's wrong with this picture?



Reduce Habitat Fragmentation





Corridors

The Proponent shall not create impediments to wildlife movement within OK Creek valley and shall ensure that corridors remain open at all times for ease of wildlife movement.

YESAB 2015-0205

What can we do?

- Reduce the number of roads
- Is this road/linear disturbance really needed?
- Are there alternatives?



or

What can we do?

20060622_jsh_0013



N 66.36471° W 137.14044°

WGS 84 595 m

2006/06/22 11:12:05

CONCLUSIONS

- Do Land Use Planning First
- Build Trust & Relationships
- Ensure Roads Reflect Community Values
- Put Roads In Places With Overlapping Values
- Needs Many Forms of Knowledge
- Requires Partnerships & Coordination
- Needs Clear Prioritization of Values

Thank you

- Questions? Thoughts?

